

# APARTMENTS

# 13,17

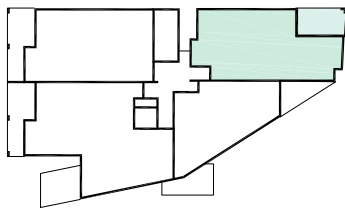
## 13 Level 3

Beds	2
Baths	2
Architectural Area	108m <sup>2</sup>
Balcony Area	15m <sup>2</sup>
<b>Total Living Area</b>	<b>123m<sup>2</sup></b>
Store Area	4m <sup>2</sup>

## 17 Level 4

Beds	2
Baths	2
Architectural Area	108m <sup>2</sup>
Balcony Area	15m <sup>2</sup>
<b>Total Living Area</b>	<b>123m<sup>2</sup></b>
Store Area	5m <sup>2</sup>

### LOCATION



### GENERAL NOTES

Variations from strata plan may apply

Furniture is indicative only and not provided

Shape and configuration of balconies, doors, windows, condensers and ducts may differ from those illustrated

Areas of apartment given are based on architectural measurements. This varies from strata areas as it is a different method of measuring the apartment.

0 1 2 3M

